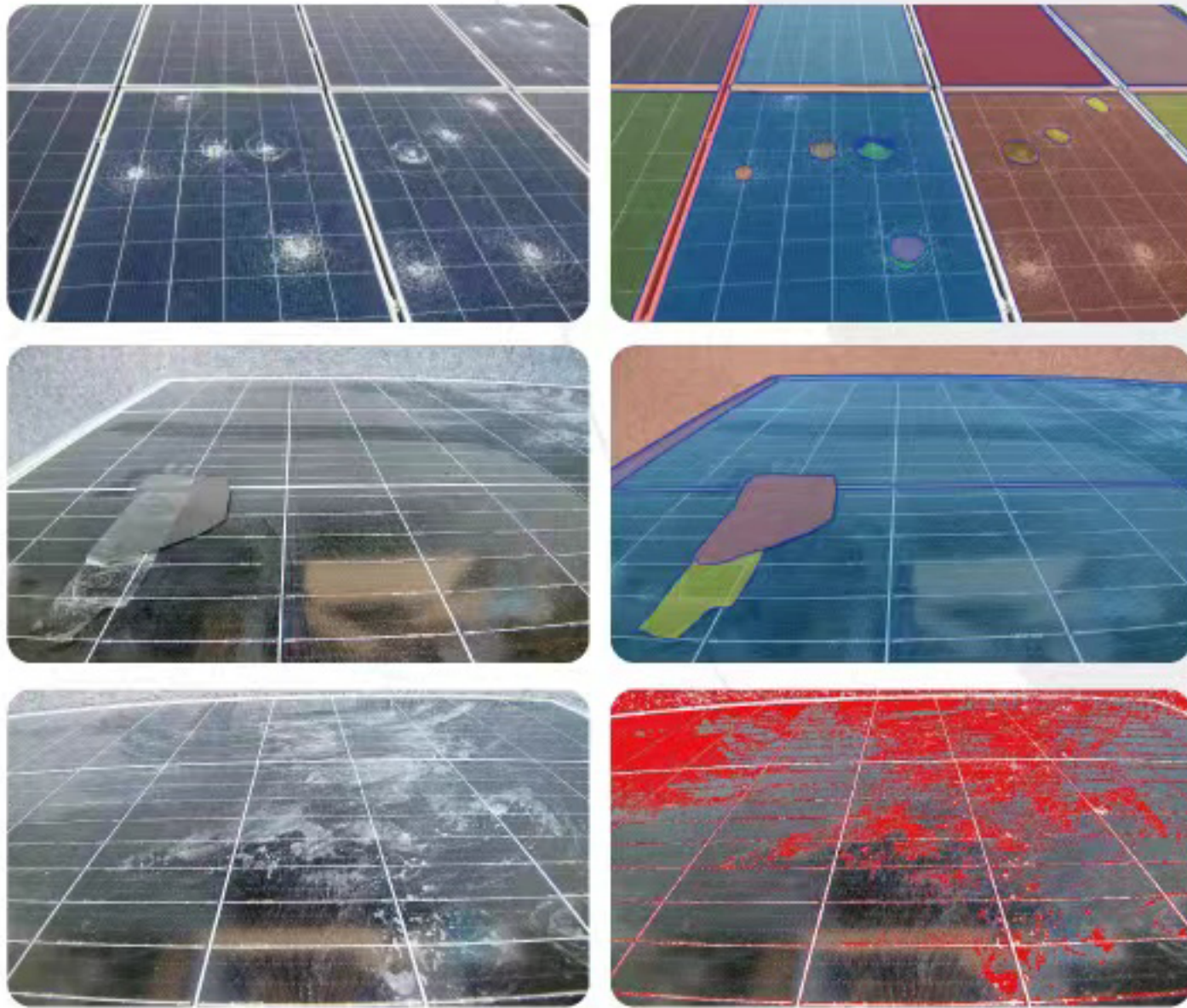


## Lingguang G1 Solar panel automatic cleaning robot

### PREPONDERANCES

#### • Visual inspection system

Intelligent visual recognition (recognition types: dust, damage, paths, obstacles, borders)



#### • Lightweight design

The use of aluminum alloy, self-developed profiles and other lightweight materials, reasonable structural design, so that the fuselage lighter, higher strength.

#### • Ultra-high compatibility

The machine has dual-axis adaptive rotation, detection and correction functions, which can adapt to complex scenes.

#### • Automatic monitoring system for rainfall and snow

The automatic rainfall and snow monitoring system is a system that monitors changes in real time through sensors of rainfall and snow, sends data to the data center through collection and transmission, and processes and analyzes the data.

### PARAMETERS

**Version:** Lingguang G1  
**Size:** 4950\*430\*310mm (The Length can be customized)  
**Weight:** 50KG  
**Working slope:** 0~45°  
**Overcome obstacles:** 5cm  
**Speed of travel:** 16m/min  
**Cleaning efficiency:** 4000 m<sup>2</sup> /h  
**Fixed mode:** guide pulley  
**Time of endurance:** 2.5H/one battery  
**Rated power:** 550W  
**Mode of travel:** Electric machine+Road wheel



#### • Product background display



**Operating ambient temperature:** -20°C ~ 60°C  
**Power supply:** Self-powered of Solar +Built-in battery (48V 30AH)  
**Water supply mode:** Connect water pipes(matching)  
**Cleaning material:** Nylon roller brush  
**Control mode:** Mobile phone APP / Web  
**Power-off protection:** Low battery reminder  
**Application scenario:** Centralized solar panel power station  
**Water consumption:** Dry cleaning and water washing  
**Waterproofing grade:** IP65  
**Cleaning components:** Yes, roller brush  
**Camera:** Yes